

Moulding Lane, London, SE14 6BT

****THIS PROPERTY IS VIRTUALLY STAGED AND RIGHT NOW UNFURNISHED, BUT TENANTS CAN REQUEST FOR FURNITURE AND LANDLORDS WOULD CONSIDER IT****

A generous one-bedroom apartment, located within Cobalt Tower just a short walk from New Cross Overground Station. The apartment features a naturally bright open-plan kitchen and reception room with ample space to dine, along with access to a large private balcony. The property offers a spacious double bedroom with built-in storage, as well as a modern family bathroom. Additional storage can be found in the hallway. The property is situated within easy reach of a wide range of local amenities, including bakeries, bars, convenience stores, restaurants, and several nearby parks.

- VIRTUALLY STAGED PROPERTY UNFURNISHED
- Private Terrace
- Good Transport Links
- Close to Local Amenities
- Plenty of Storage
- Modern Two Bedroom Apartment

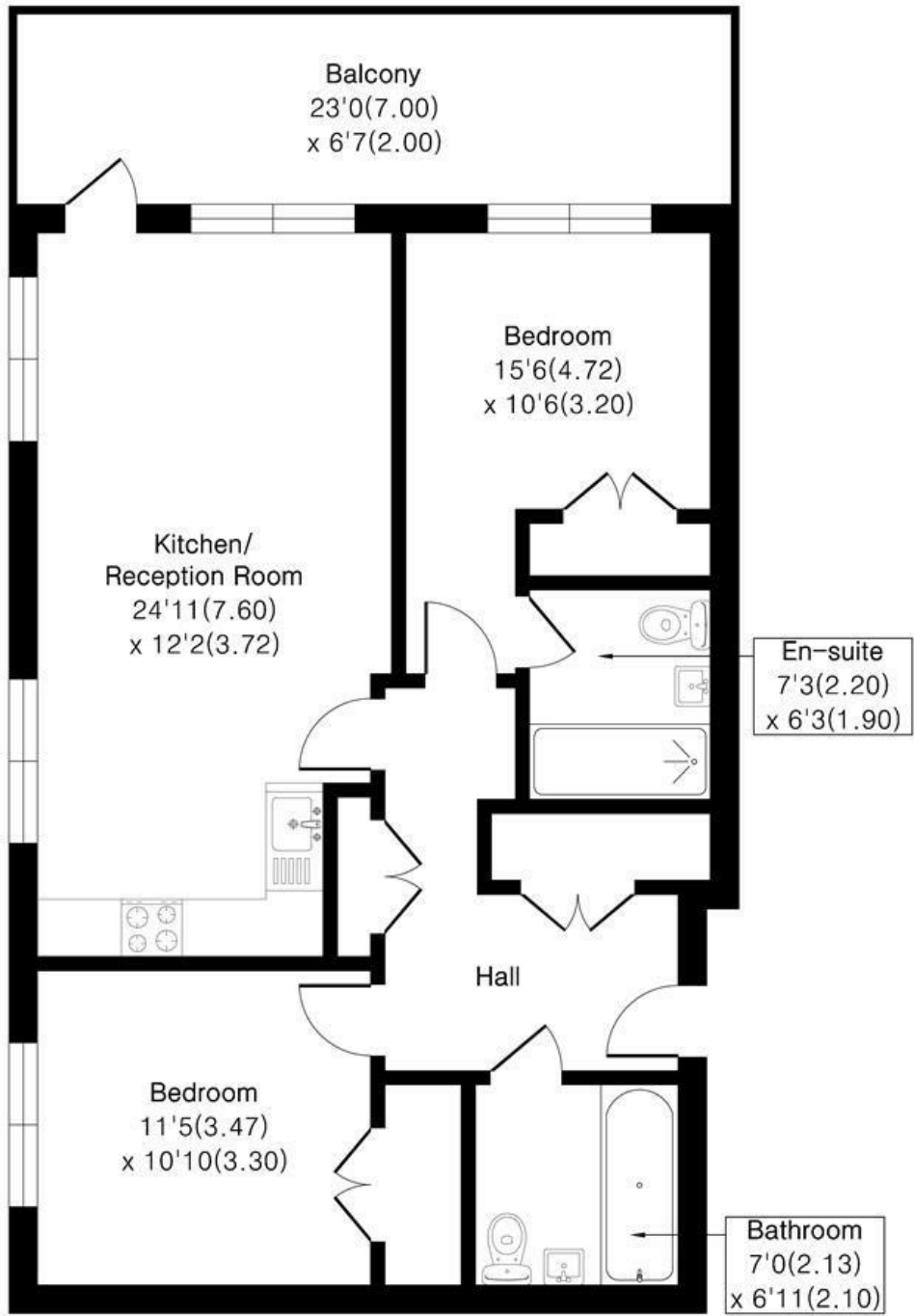
Alex & Matteo
ESTATE AGENTS

£2,200 Per month

Quartz Apartments SE14

Approximate Area = 825 sq ft / 76.6 sq m

For identification only - Not To Scale



Alex & Matteo
ESTATE AGENTS

Floor plan Produced in accordance with RICS Property Measurement 2nd Edition.
Incorporating International Property Measurement Standards (IPMS2 Residential).
Produced for Alex & Matteo Estate Agents.



Energy Efficiency Rating		Current	Potential
Very energy efficient - lower running costs			
(92 plus) A			
(81-91) B		84	84
(69-80) C			
(55-68) D			
(39-54) E			
(21-38) F			
(1-20) G			
Not energy efficient - higher running costs			
England & Wales		EU Directive 2002/91/EC	